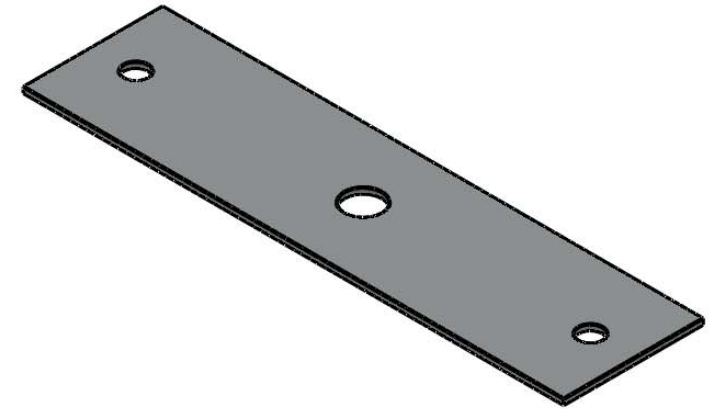
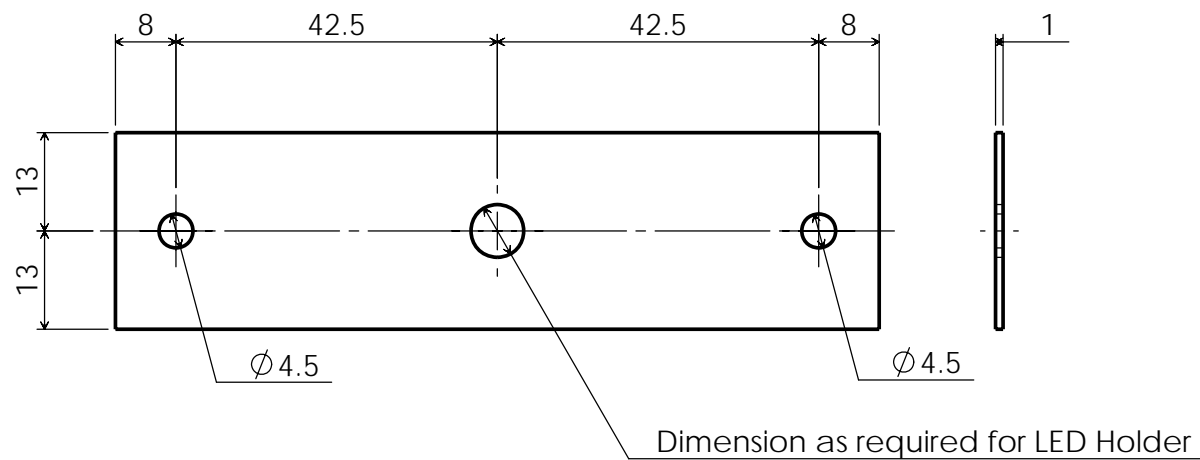


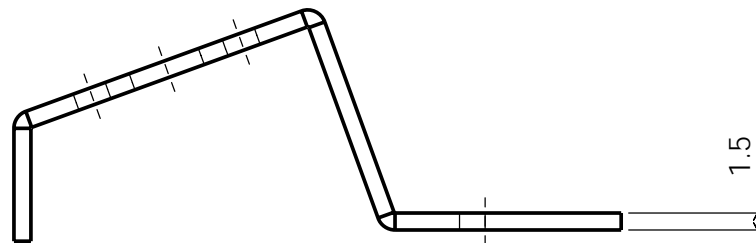
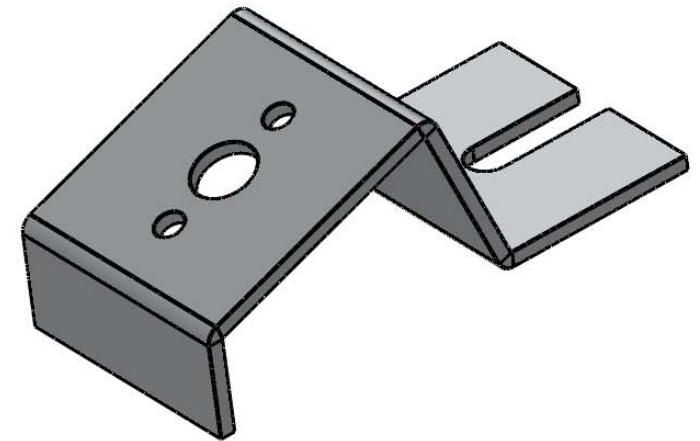
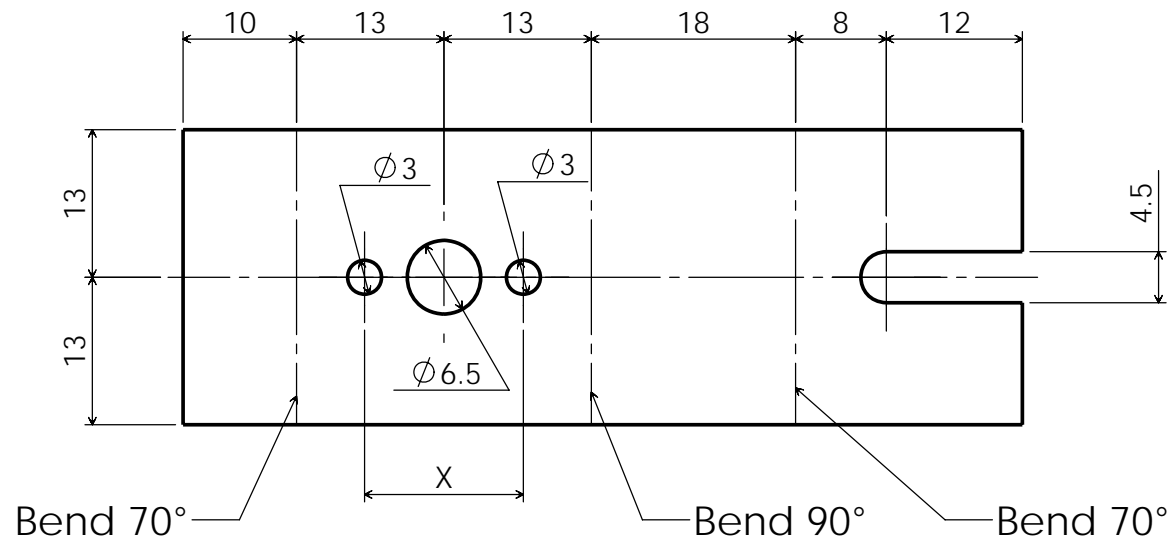


Name : \_\_\_\_\_

Part	Complete
1	
2	
3	
4	
5	
6	
7	
8	
9	
10	
11	

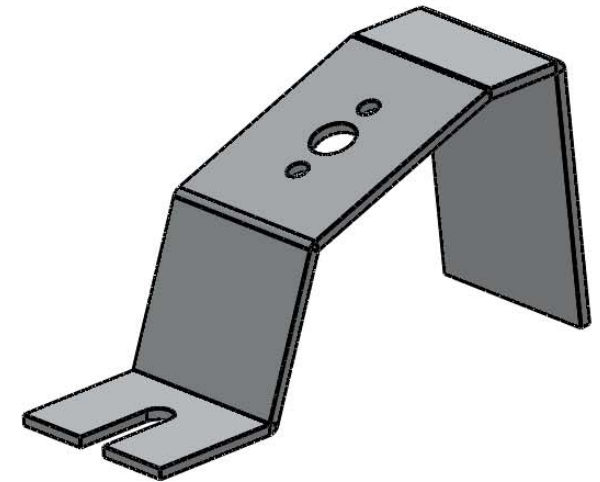
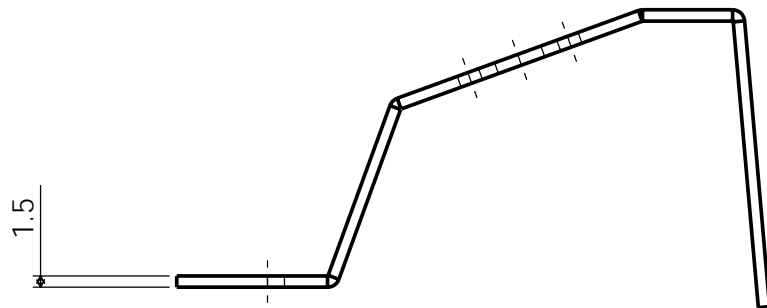


2014 HL Project	JC
PracticalStudent.com	
Part Number : 1	
Part Name : Centre Support Plate	
Material : Aluminium, Copper or Brass	A4
	18/10/13
Required : 1	Drawing 1 of 11



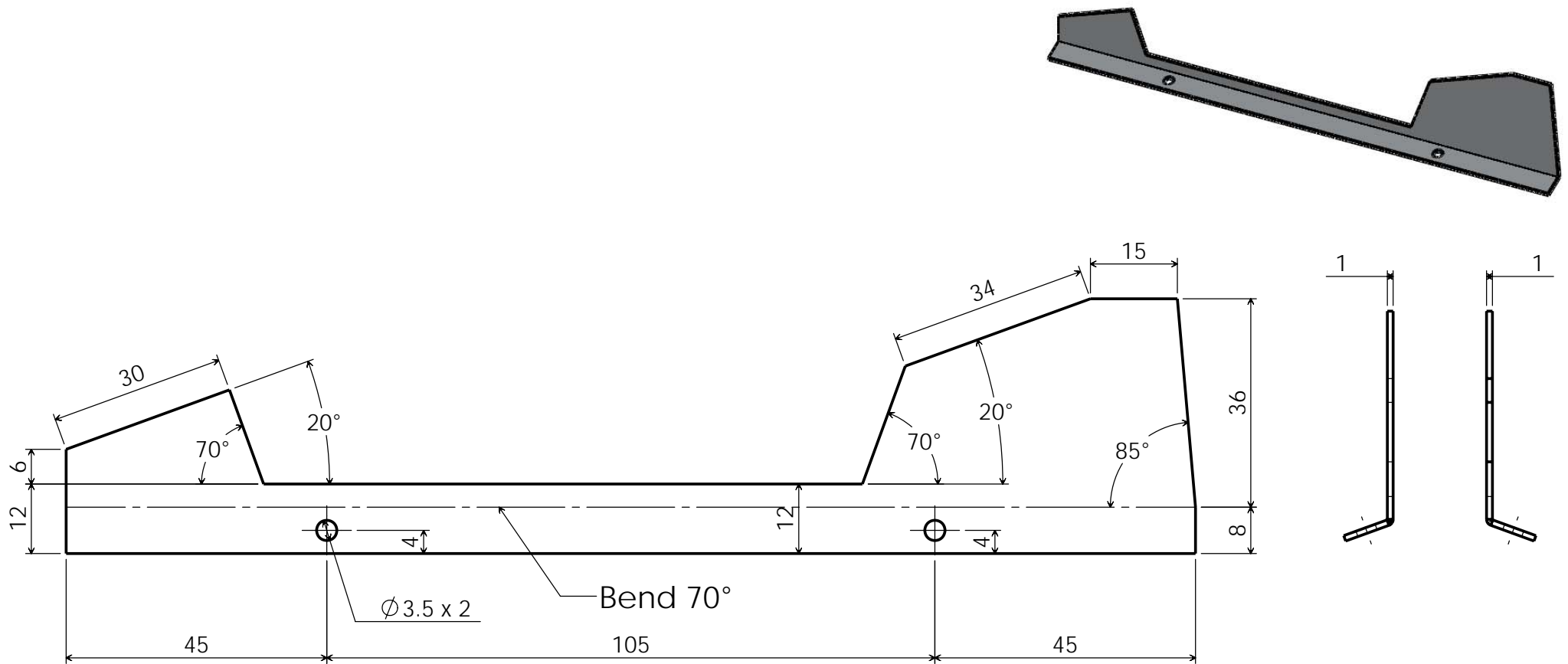
X Dimension to suit Motor

2014 HL Project	JC
PracticalStudent.com	
Part Number : 2	
Part Name : Front Motor Support	
Material : Aluminium	A4
Required : 1	18/10/13
Drawing 2 of 11	

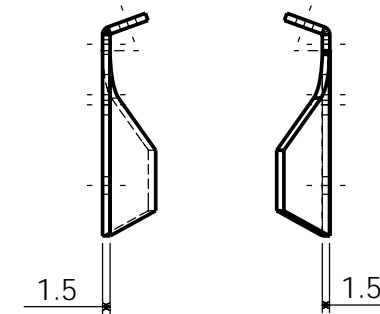


X Dimension to suit Motor

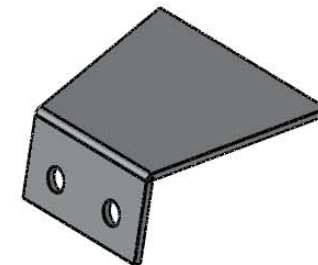
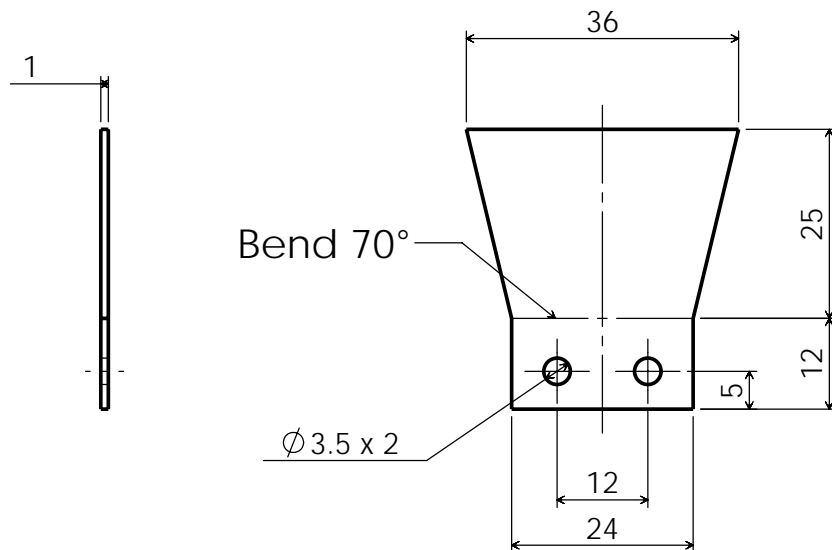
2014 HL Project	JC
PracticalStudent.com	
Part Number : 3	
Part Name : Rear Motor Support	
Material : Aluminium	A4 18/10/13
Required : 1	Drawing 3 of 11



2014 HL Project	JC
PracticalStudent.com	
Part Number : 4 & 5	
Part Name : Upper Left & Right Panels	
Material : Aluminium, Copper or Brass	A4
Required : 2	18/10/13
Drawing 4 & 5 of 11	



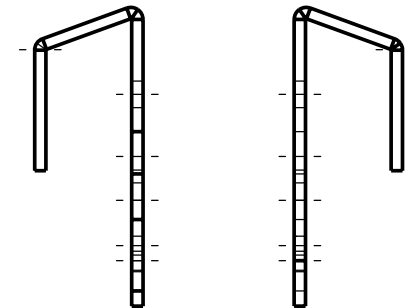
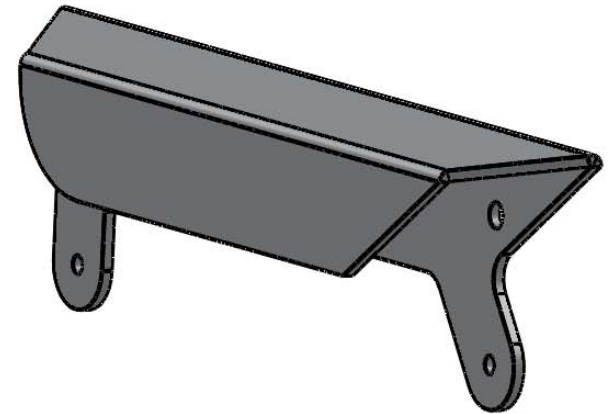
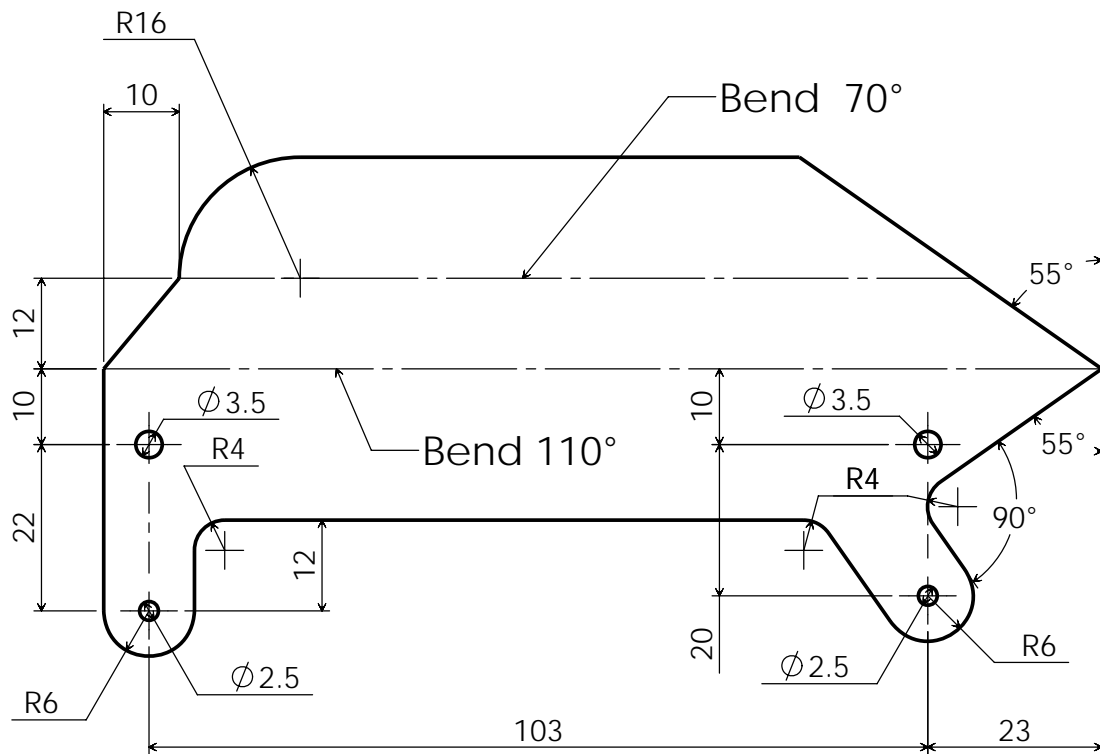
2014 HL Project	JC
PracticalStudent.com	
Part Number : 6 & 7	
Part Name : Lower Left & Right Panel	
Material : Aluminium	A4 18/10/13
Required : 2	Drawing 6 & 7 of 11



2014 HL Project	JC
PracticalStudent.com	
Part Number : 8	
Part Name : Nose Plate	
Material : Aluminium, Copper or Brass	A4
Required : 1	18/10/13
Drawing 8 of 11	







2014 HL Project	JC
PracticalStudent.com	
Part Number : 10 & 11	
Part Name : Left & Right Undercarriage Support	
Material : Aluminium	A4
Required : 2	18/10/13
Drawing 10 & 11 of 11	