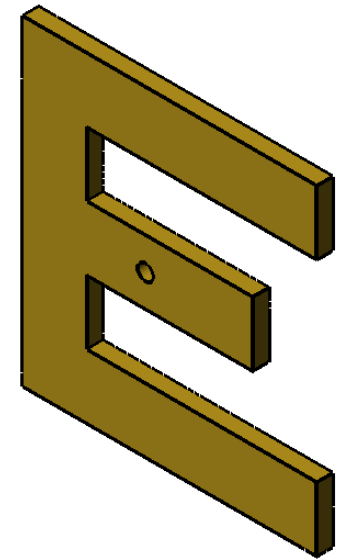
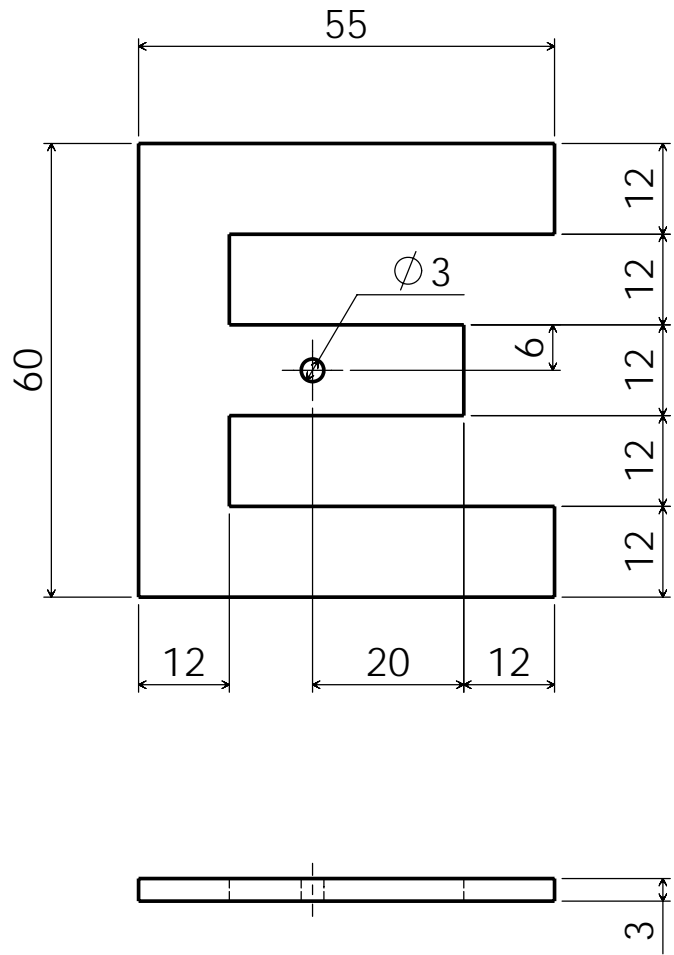


Name : _____

Part	Complete
1	
2	
3	
4	
5	
6	
7	
8	
9	
10	
11	
12	



The Weathervane	J.C.
PracticalStudent.com	
Part Number : 1	
Part Name : Letter E	
Material : Brass, Aluminium or Steel	A4
	2/8/07
Required : 1	Drawing 1 of 1

Before Starting

Tools for Marking Out :

Tools for Manufacturing :

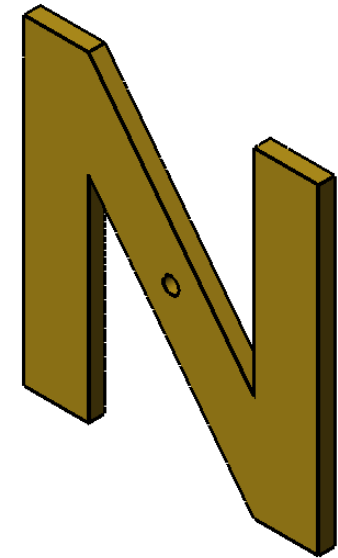
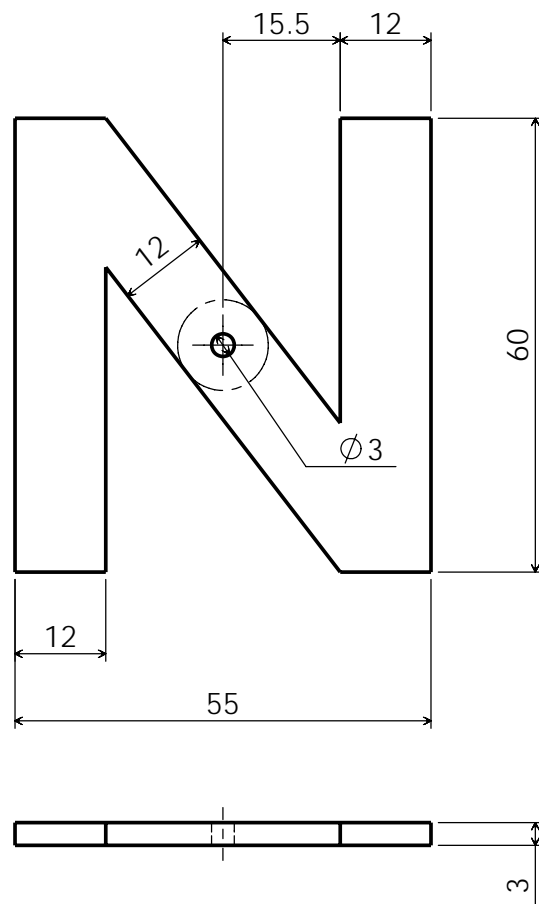
Skill I am going to concentrate on :

After completion

Marking Accuracy	Poor	Medium	Good
Hacksawing & Filing Quality	Poor	Medium	Good
Surface Finish	Poor	Medium	Good

What did I do well :

What do I need to improve on :



The Weathervane	J.C.
PracticalStudent.com	
Part Number : 2	
Part Name : Letter N	
Material : Brass, Aluminium or Steel	A4
	2/8/07
Required : 1	Drawing 1 of 1

Before Starting

Tools for Marking Out :

Tools for Manufacturing :

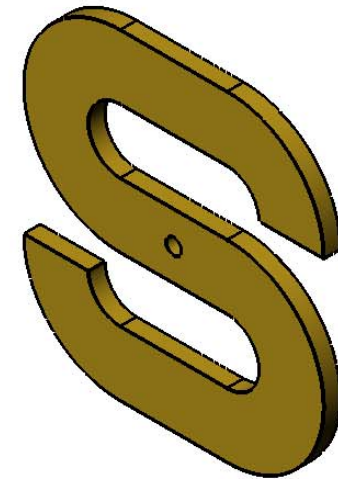
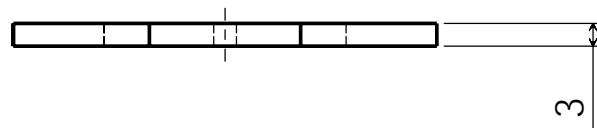
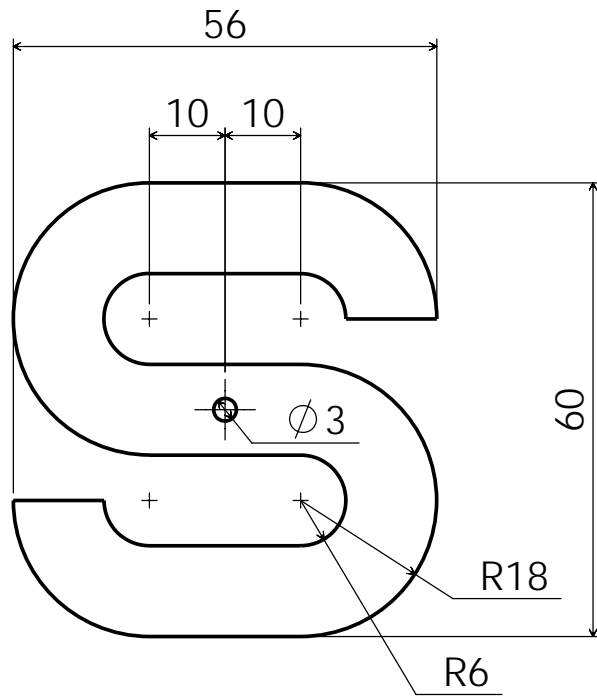
Skill I am going to concentrate on :

After completion

Marking Accuracy	Poor	Medium	Good
Hacksawing & Filing Quality	Poor	Medium	Good
Surface Finish	Poor	Medium	Good

What did I do well :

What do I need to improve on :



The Weathervane	J.C.
PracticalStudent.com	
Part Number : 3	
Part Name : Letter S	
Material : Brass, Aluminium or Steel	A4
	2/8/07
Required : 1	Drawing 1 of 1

Before Starting

Tools for Marking Out :

Tools for Manufacturing :

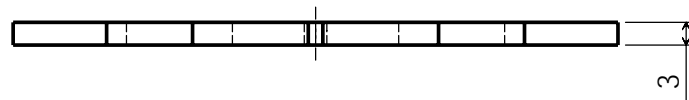
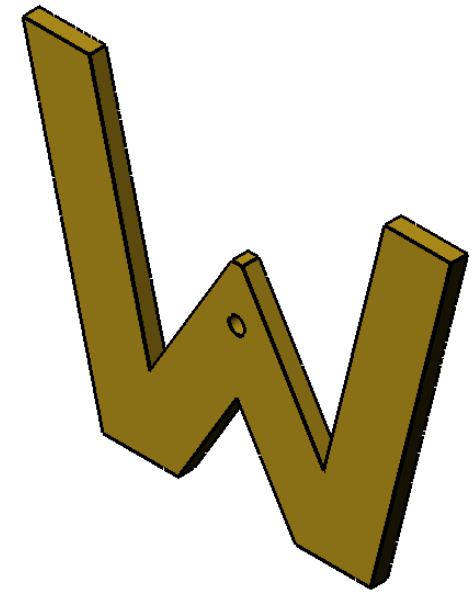
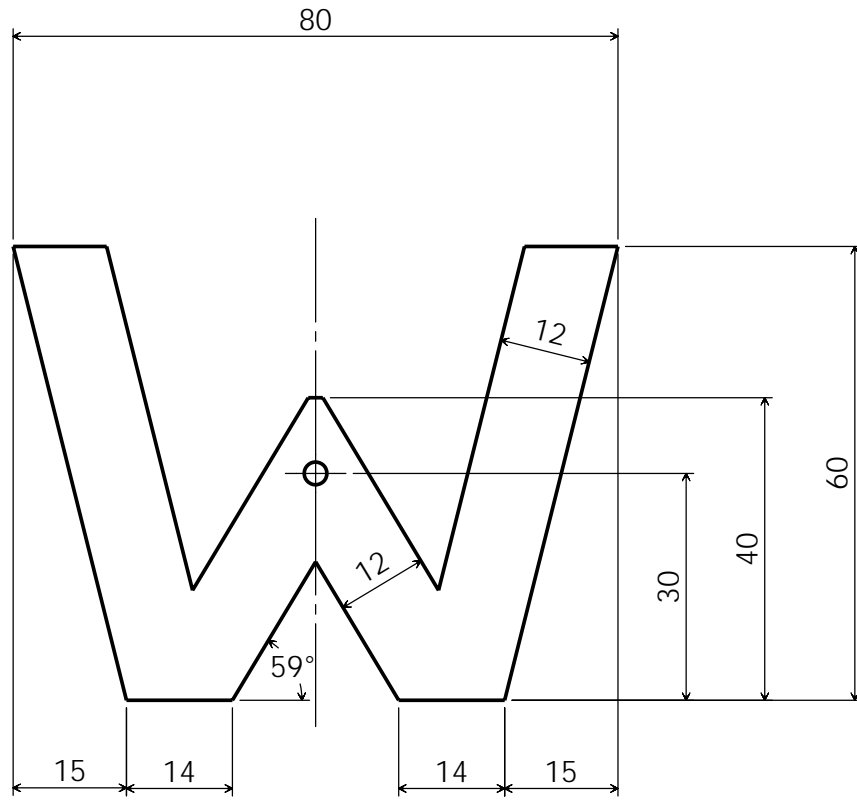
Skill I am going to concentrate on :

After completion

Marking Accuracy	Poor	Medium	Good
Hacksawing & Filing Quality	Poor	Medium	Good
Surface Finish	Poor	Medium	Good

What did I do well :

What do I need to improve on :



The Weathervane	J.C.
PracticalStudent.com	
Part Number : 4	
Part Name : Letter W	
Material : Brass, Aluminium or Steel	A4
	2/8/07
Required : 1	Drawing 1 of 1

Before Starting

Tools for Marking Out :

Tools for Manufacturing :

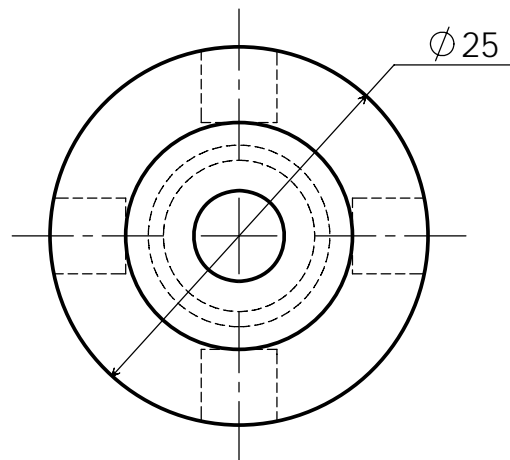
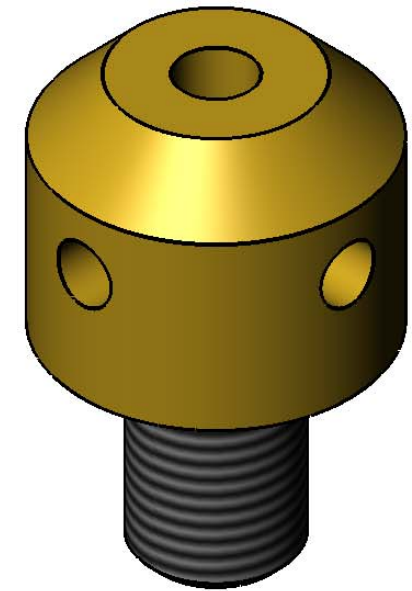
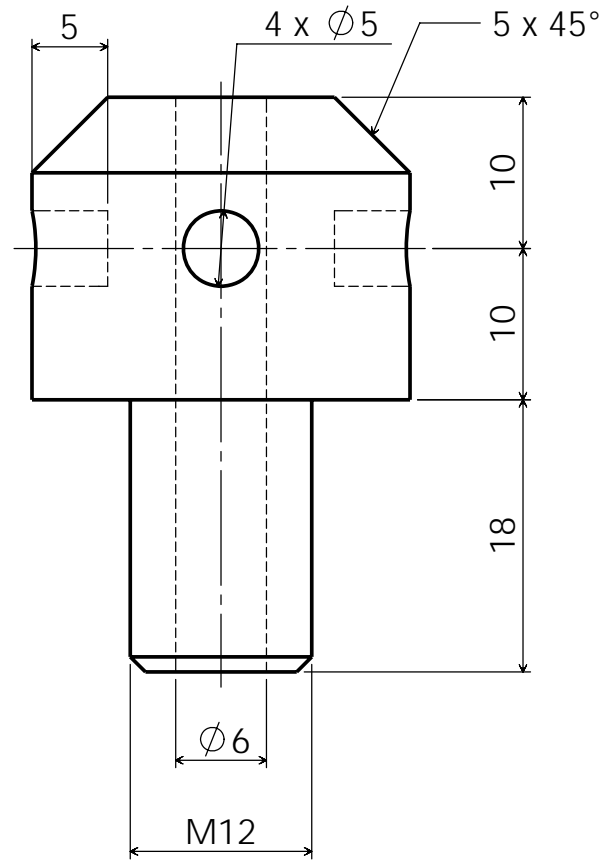
Skill I am going to concentrate on :

After completion

Marking Accuracy	Poor	Medium	Good
Hacksawing & Filing Quality	Poor	Medium	Good
Surface Finish	Poor	Medium	Good

What did I do well :

What do I need to improve on :



The Weathervane	J.C.
PracticalStudent.com	
Part Number : 6	
Part Name : Pivot	
Material : Brass, Aluminium or Steel	A4
	2/8/07
Required : 1	Drawing 1 of 1

Before Starting

Tools for Marking Out :

Tools for Manufacturing :

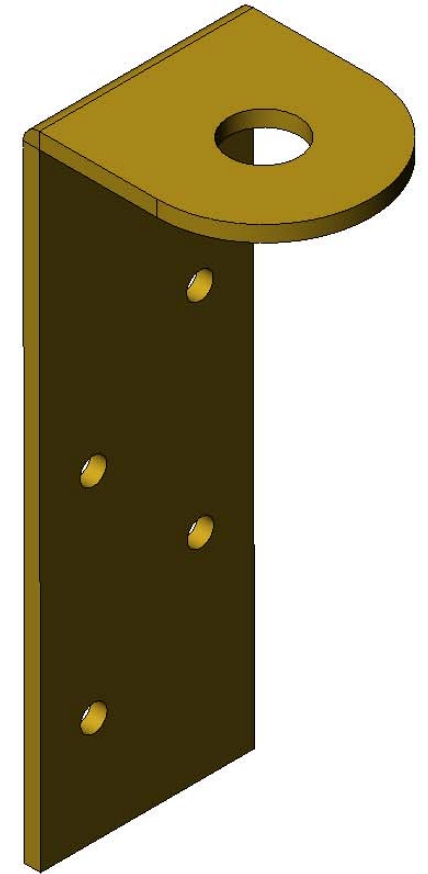
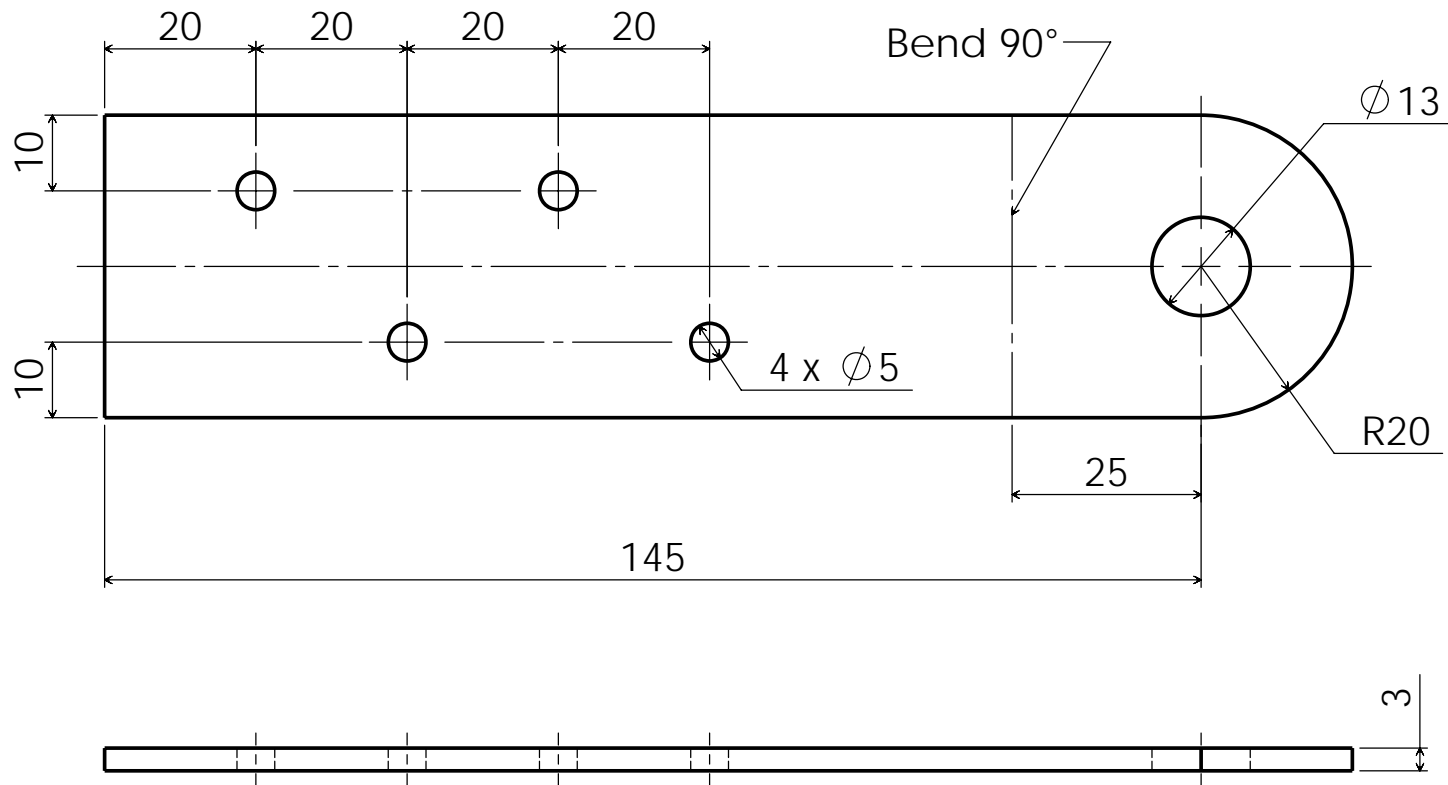
Skill I am going to concentrate on :

After completion

Marking Accuracy	Poor	Medium	Good
Hacksawing & Filing Quality	Poor	Medium	Good
Surface Finish	Poor	Medium	Good

What did I do well :

What do I need to improve on :



The Weathervane	J.C.
PracticalStudent.com	
Part Number : 6	
Part Name : Stand	
Material : Brass, Aluminium or Steel	A4
Required : 1	2/8/07
Drawing 1 of 1	

Before Starting

Tools for Marking Out :

Tools for Manufacturing :

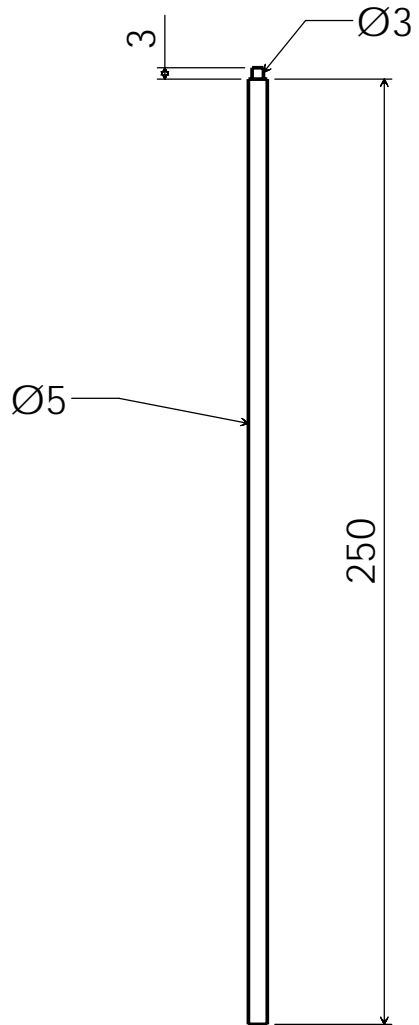
Skill I am going to concentrate on :

After completion

Marking Accuracy	Poor	Medium	Good
Hacksawing & Filing Quality	Poor	Medium	Good
Surface Finish	Poor	Medium	Good

What did I do well :

What do I need to improve on :



The Weathervane	J.C.
PracticalStudent.com	
Part Number : 7	
Part Name : Letter Bar	
Material : Brass, Aluminium or Steel	A4
	2/8/07
Required : 4	Drawing 1 of 1

Before Starting

Tools for Marking Out :

Tools for Manufacturing :

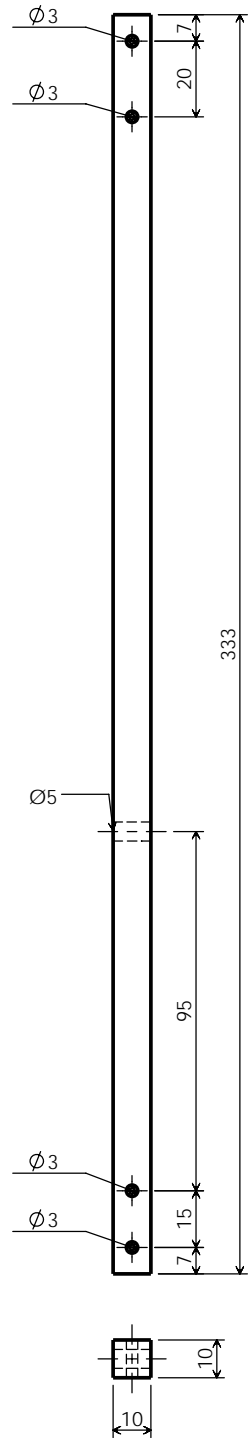
Skill I am going to concentrate on :

After completion

Marking Accuracy	Poor	Medium	Good
Hacksawing & Filing Quality	Poor	Medium	Good
Surface Finish	Poor	Medium	Good

What did I do well :

What do I need to improve on :



The Weathervane	J.C.
PracticalStudent.com	
Part Number : 8	
Part Name : Arrow Bar	
Material : Brass, Aluminium or Steel	A4
	2/8/07
Required : 1	Drawing 1 of 1

Before Starting

Tools for Marking Out :

Tools for Manufacturing :

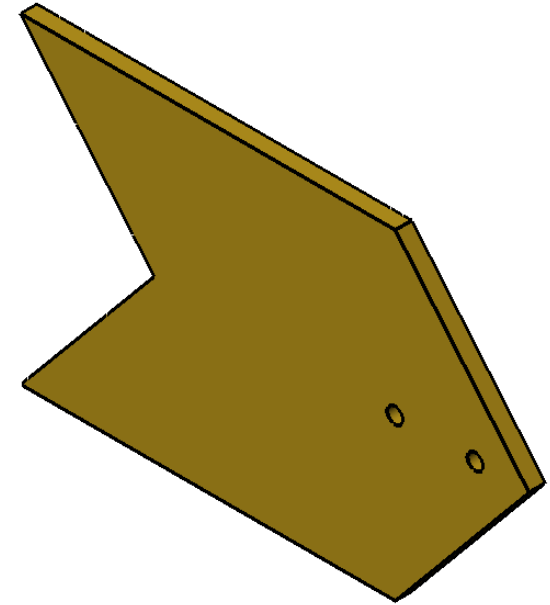
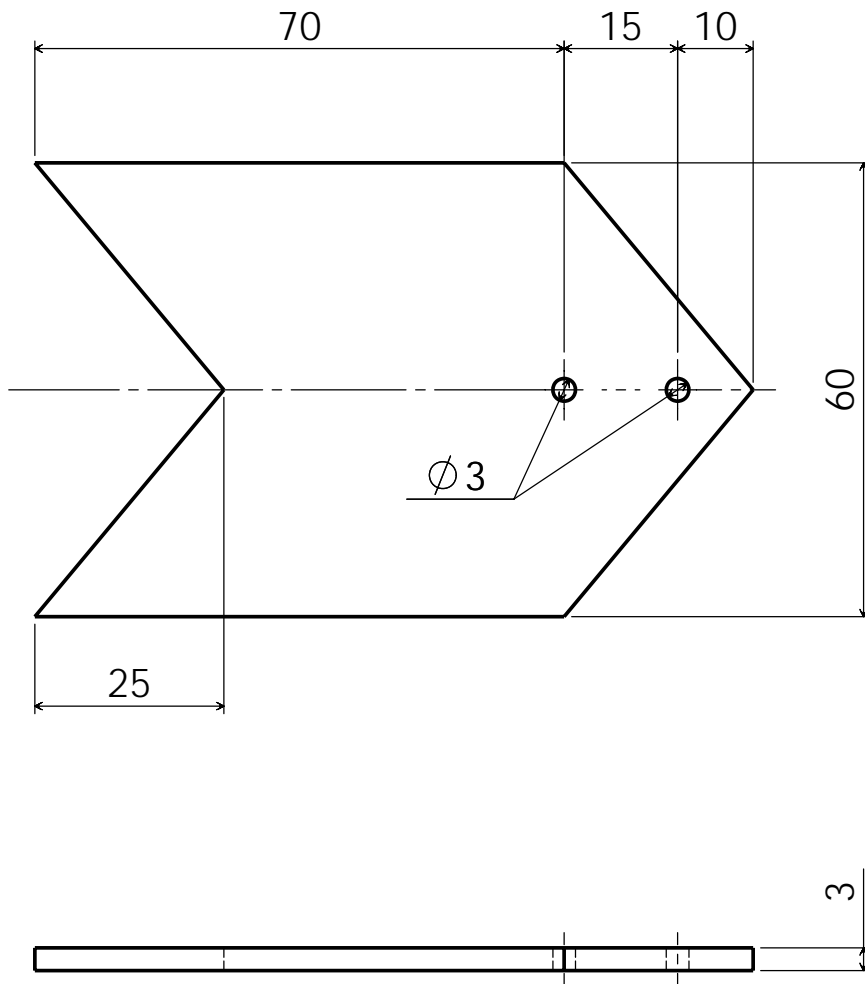
Skill I am going to concentrate on :

After completion

Marking Accuracy	Poor	Medium	Good
Hacksawing & Filing Quality	Poor	Medium	Good
Surface Finish	Poor	Medium	Good

What did I do well :

What do I need to improve on :



The Weathervane	J.C.
PracticalStudent.com	
Part Number : 9	
Part Name : Tail	
Material : Brass, Aluminium or Steel	A4
	2/8/07
Required : 1	Drawing 1 of 1

Before Starting

Tools for Marking Out :

Tools for Manufacturing :

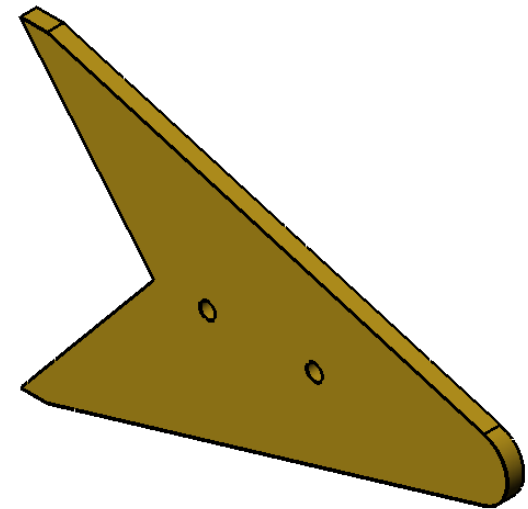
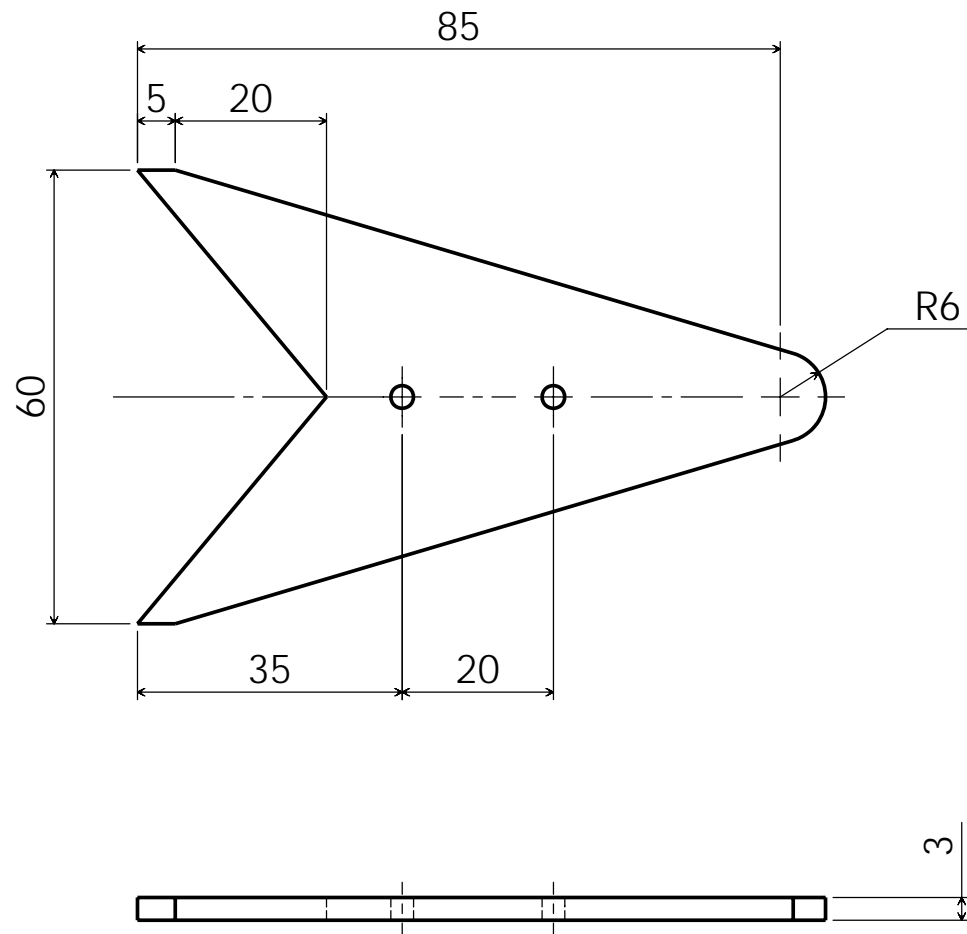
Skill I am going to concentrate on :

After completion

Marking Accuracy	Poor	Medium	Good
Hacksawing & Filing Quality	Poor	Medium	Good
Surface Finish	Poor	Medium	Good

What did I do well :

What do I need to improve on :



The Weathervane	J.C.
PracticalStudent.com	
Part Number : 10	
Part Name : Arrow	
Material : Brass, Aluminium or Steel	A4
	2/8/07
Required : 1	Drawing 1 of 1

Before Starting

Tools for Marking Out :

Tools for Manufacturing :

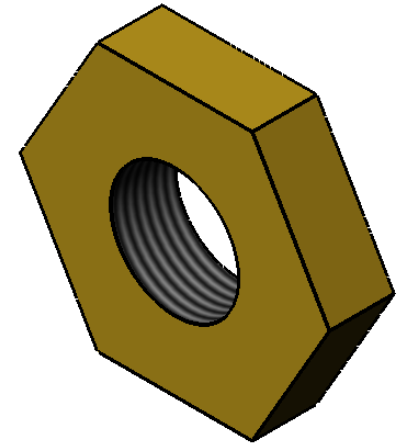
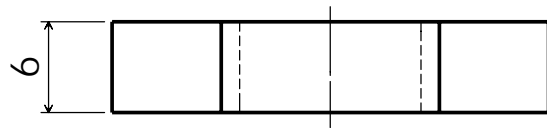
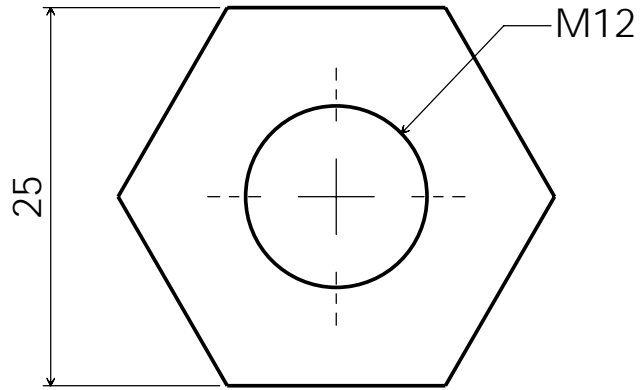
Skill I am going to concentrate on :

After completion

Marking Accuracy	Poor	Medium	Good
Hacksawing & Filing Quality	Poor	Medium	Good
Surface Finish	Poor	Medium	Good

What did I do well :

What do I need to improve on :



The Weathervane	J.C.
PracticalStudent.com	
Part Number : 11	
Part Name : Nut	
Material : Brass, Aluminium or Steel	A4
	2/8/07
Required : 1	Drawing 1 of 1

Before Starting

Tools for Marking Out :

Tools for Manufacturing :

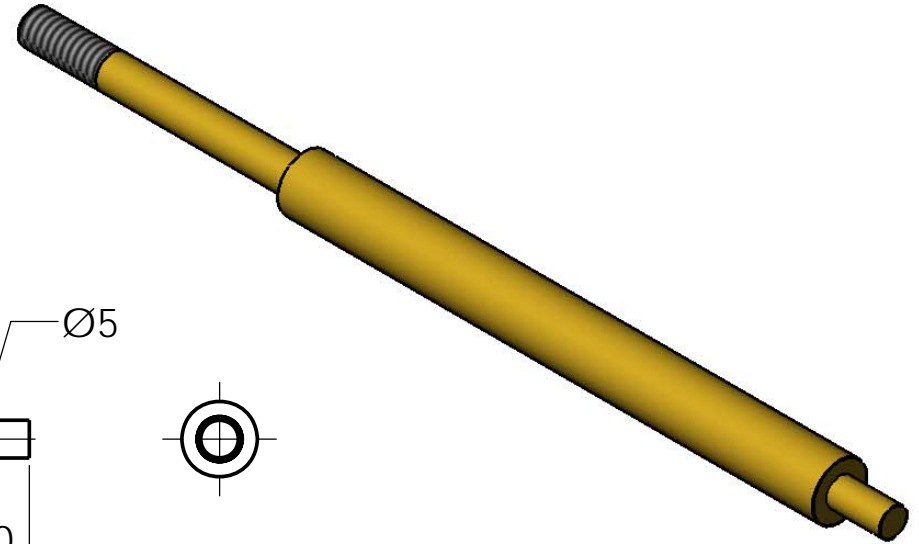
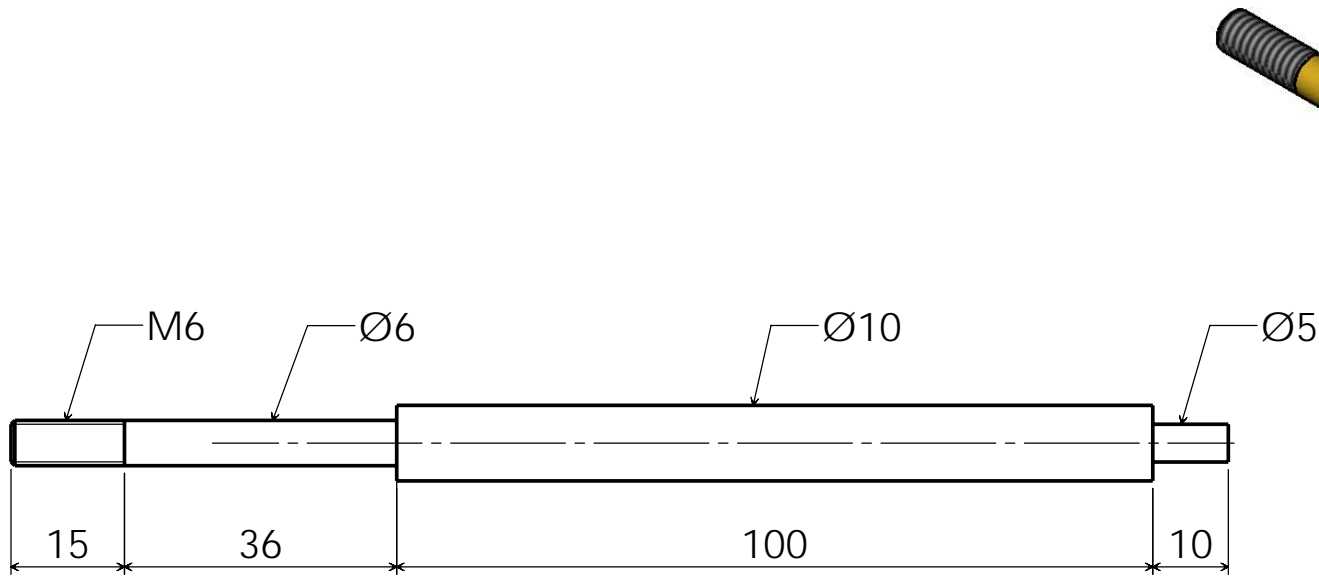
Skill I am going to concentrate on :

After completion

Marking Accuracy	Poor	Medium	Good
Hacksawing & Filing Quality	Poor	Medium	Good
Surface Finish	Poor	Medium	Good

What did I do well :

What do I need to improve on :



The Weathervane	J.C.
PracticalStudent.com	
Part Number : 12	
Part Name : Swivel Bar	
Material : Brass, Aluminium or Steel	A4
	2/8/07
Required : 1	Drawing 1 of 1

Before Starting

Tools for Marking Out :

Tools for Manufacturing :

Skill I am going to concentrate on :

After completion

Marking Accuracy	Poor	Medium	Good
Hacksawing & Filing Quality	Poor	Medium	Good
Surface Finish	Poor	Medium	Good

What did I do well :

What do I need to improve on :